

Anti-delta 1 Catenin/p120 Catenin Rabbit Monoclonal Antibody Catalog # ABO14316

Specification

Anti-delta 1 Catenin/p120 Catenin Rabbit Monoclonal Antibody - Product Information

Application	WB, IHC, IF, ICC, IP
Primary Accession	O60716
Host	Rabbit
Isotype	Rabbit IgG
Reactivity	Rat, Human, Mouse
Clonality	Monoclonal
Format	Liquid

Description

Anti-delta 1 Catenin/p120 Catenin Rabbit Monoclonal Antibody . Tested in WB, IHC, ICC/IF, IP applications. This antibody reacts with Human, Mouse, Rat.

Anti-delta 1 Catenin/p120 Catenin Rabbit Monoclonal Antibody - Additional Information

Gene ID 1500

Other Names

Catenin delta-1, Cadherin-associated Src substrate, CAS, p120 catenin, p120(ctn), p120(cas), CTNND1, KIAA0384

Calculated MW

108170 MW KDa

Application Details

WB 1:500-1:2000
IHC 1:50-1:100
ICC/IF 1:50-1:100
IP 1:30

Subcellular Localization

Cytoplasm. Nucleus. Cell membrane. Interaction with GLIS2 promotes nuclear translocation (By similarity). Detected at cell-cell contacts. NANOS1 induces its translocation from sites of cell-cell contact to the cytoplasm. Isoforms 4A and 1AB are excluded from the nucleus..

Tissue Specificity

Expressed in vascular endothelium. Melanocytes and melanoma cells primarily express the long isoform 1A, whereas keratinocytes express shorter isoforms, especially 3A. The shortest isoform 4A, is detected in normal keratinocytes and melanocytes, and generally lost from cells derived from squamous cell carcinomas or melanomas. The C-terminal alternatively spliced exon B is present in the p120ctn transcripts in the colon, intestine and prostate, but lost in several tumor tissues derived from these organs..

Contents

Rabbit IgG in phosphate buffered saline, pH 7.4, 150mM NaCl, 0.02% sodium azide and 50% glycerol, 0.4-0.5mg/ml BSA.

Immunogen

A synthesized peptide derived from human delta 1 Catenin/p120 Catenin

Purification

Affinity-chromatography

Storage**Store at -20°C for one year. For short term storage and frequent use, store at 4°C for up to one month. Avoid repeated freeze-thaw cycles.****Anti-delta 1 Catenin/p120 Catenin Rabbit Monoclonal Antibody - Protein Information****Name** CTNND1 ([HGNC:2515](#))**Synonyms** KIAA0384**Function**

Key regulator of cell-cell adhesion that associates with and regulates the cell adhesion properties of both C-, E- and N-cadherins, being critical for their surface stability (PubMed:[14610055](http://www.uniprot.org/citations/14610055), PubMed:[20371349](http://www.uniprot.org/citations/20371349)). Promotes localization and retention of DSG3 at cell-cell junctions, via its interaction with DSG3 (PubMed:[18343367](http://www.uniprot.org/citations/18343367)). Beside cell-cell adhesion, regulates gene transcription through several transcription factors including ZBTB33/Kaiso2 and GLIS2, and the activity of Rho family GTPases and downstream cytoskeletal dynamics (PubMed:[10207085](http://www.uniprot.org/citations/10207085), PubMed:[20371349](http://www.uniprot.org/citations/20371349)). Implicated both in cell transformation by SRC and in ligand-induced receptor signaling through the EGF, PDGF, CSF-1 and ERBB2 receptors (PubMed:[17344476](http://www.uniprot.org/citations/17344476)).

Cellular Location

Cell junction, adherens junction. Cytoplasm. Nucleus. Cell membrane. Cell junction.
Note=Interaction with GLIS2 promotes nuclear translocation (By similarity). Detected at cell-cell contacts (PubMed:15240885, PubMed:17047063). NANOS1 induces its translocation from sites of cell-cell contact to the cytoplasm (PubMed:17047063). CDH1 enhances cell membrane localization (PubMed:15240885). Localizes to cell-cell contacts as keratinocyte differentiation progresses (By similarity) {ECO:0000250|UniProtKB:P30999, ECO:0000269|PubMed:11896187, ECO:0000269|PubMed:15240885, ECO:0000269|PubMed:17047063} [Isoform 2A]: Nucleus [Isoform 4A]: Cytoplasm

Tissue Location

Expressed in vascular endothelium. Melanocytes and melanoma cells primarily express the long isoform 1A, whereas keratinocytes express shorter isoforms, especially 3A. The shortest isoform 4A, is detected in normal keratinocytes and melanocytes, and generally lost from cells derived from squamous cell carcinomas or melanomas. The C-terminal alternatively spliced exon B is present in the p120ctn transcripts in the colon, intestine and prostate, but lost in several tumor tissues derived from these organs

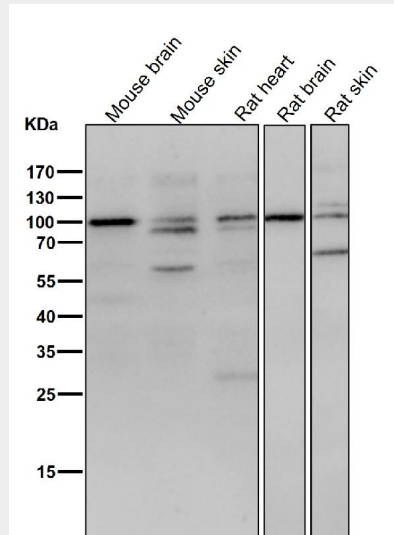
Anti-delta 1 Catenin/p120 Catenin Rabbit Monoclonal Antibody - Protocols

Provided below are standard protocols that you may find useful for product applications.

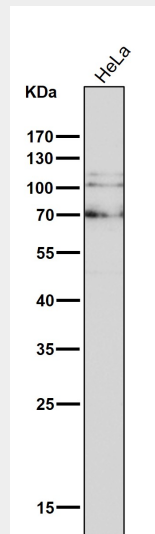
- [Western Blot](#)
- [Blocking Peptides](#)
- [Dot Blot](#)

- [Immunohistochemistry](#)
- [Immunofluorescence](#)
- [Immunoprecipitation](#)
- [Flow Cytometry](#)
- [Cell Culture](#)

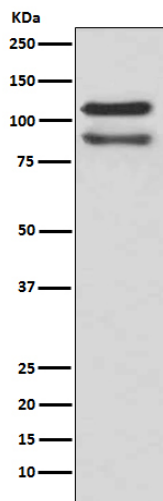
Anti-delta 1 Catenin/p120 Catenin Rabbit Monoclonal Antibody - Images



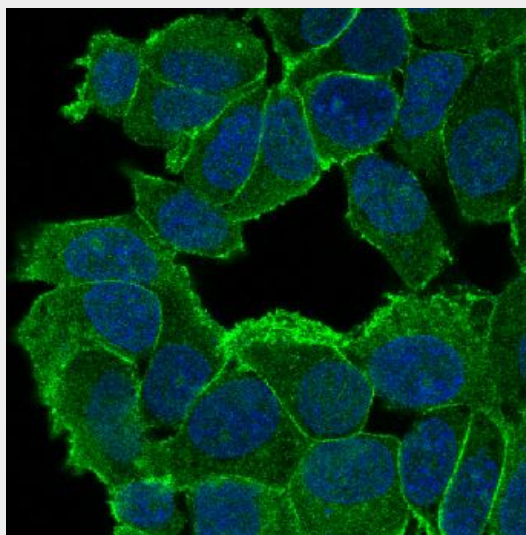
All lanes use the Antibody at 1:3K dilution for 1 hour at room temperature.



All lanes use the Antibody at 1:3K dilution for 1 hour at room temperature.



Western blot analysis of delta1 Catenin expression in HeLa cell lysate.



Immunofluorescent analysis of MCF-7 cells, using delta 1 Catenin/p120 Catenin Antibody.